



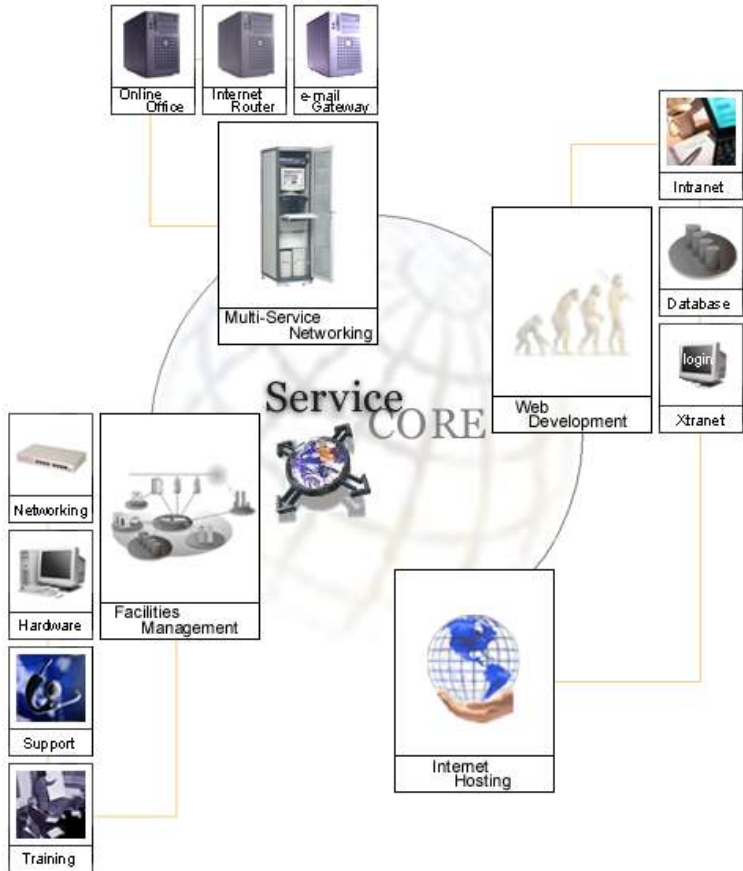
# NETWORKS Online

*“Information is the Solution”*

## Company Overview

### Profile

NetworksOnline provides single-source solutions to organisations looking to outsource their internal IT infrastructure. This is achieved by providing solutions from the ground up, such as internet-enabled servers, networking, hardware, and eCommerce development.



*NetworksOnline*

*“Information is The Solution”*

*www.networksonline.co.za  
info@networksonline.co.za*

*Tel: +27 11 886-7644  
Fax: +27 11 886-7643*

*P.O. Box 1060  
Cresta  
2118*

*280 Oak Avenue  
Randburg  
2194*

### Methodology

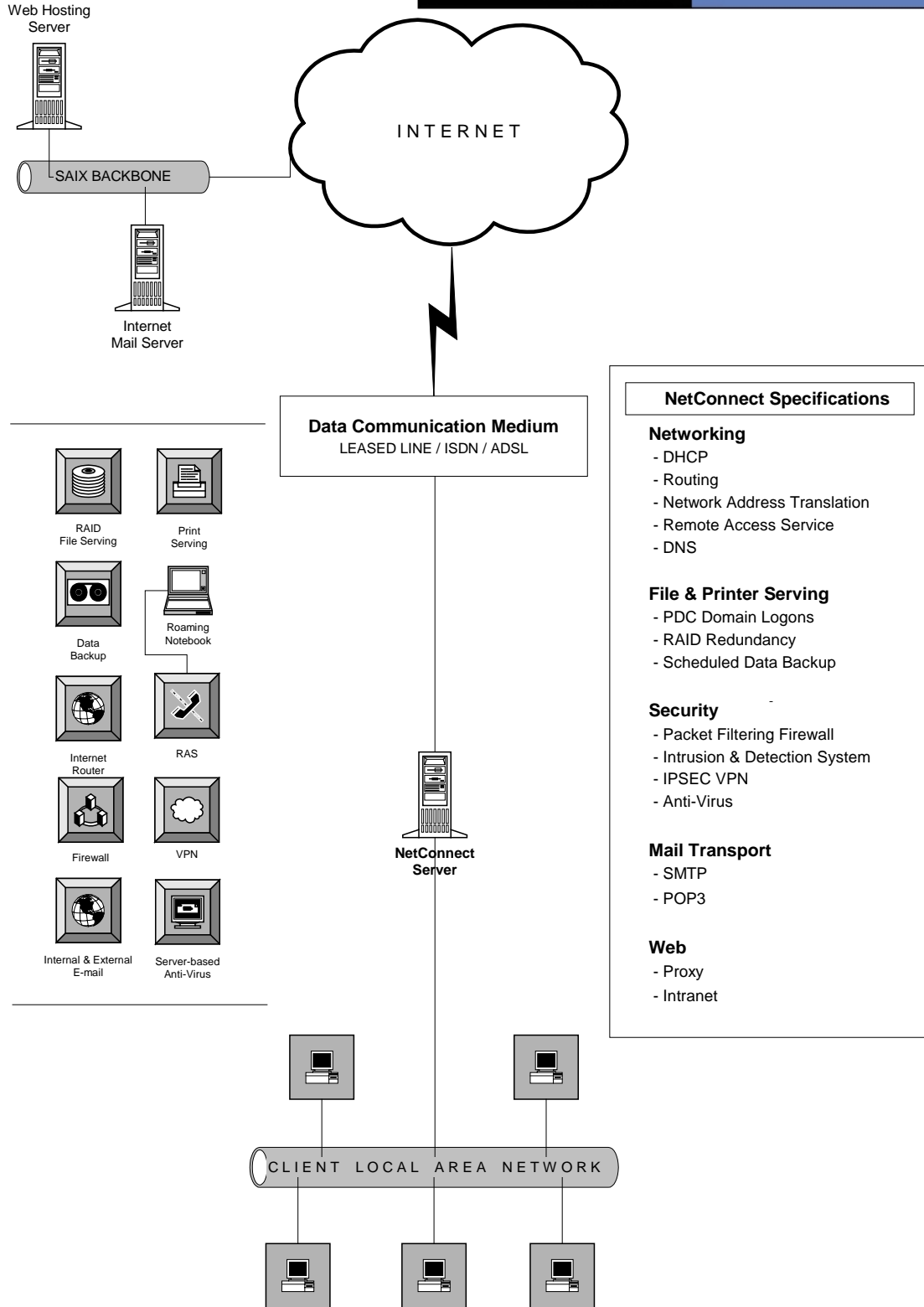
The NetworksOnline methodology of Develop / Implement / Maintain ensures that every project is perfectly suited to the client’s requirements. This approach further ensures that our clients achieve optimal uptime and investment lifecycle from their IT infrastructure, maximizing their return on investment. The building of trust-based relationships through high levels of service delivery makes NetworksOnline *the* best choice you could make.

### Service Benefits

- Access to specialised expertise
- Expensive internal IT departments become obsolete
- Service Level Agreements ensure reliability
- Single point of contact
- Fixed pricing allows for effective budget management.
- Open Source Technology ensures lowest cost of ownership

*Directors:  
George Soumbouglou  
Lloyd Anderson*

*A division of  
CDR-Technologies  
Reg. #: CK97/31358/23*



### NetConnect Specifications

#### Networking

- DHCP
- Routing
- Network Address Translation
- Remote Access Service
- DNS

#### File & Printer Serving

- PDC Domain Logons
- RAID Redundancy
- Scheduled Data Backup

#### Security

- Packet Filtering Firewall
- Intrusion & Detection System
- IPSEC VPN
- Anti-Virus

#### Mail Transport

- SMTP
- POP3

#### Web

- Proxy
- Intranet



*“Information is the Solution”*

## NetConnect Range

### Server Features

Component	Cost	Included in	
		Core Gateway	Corporate Gateway
Firewall	R 250.00	•	•
Internet Routing	R 250.00	•	•
E-Mail Server	R 250.00	•	•
Anti-Virus	R 350.00	•	•
Spam Control	R 150.00	•	•
Remote access service	R 250.00	•	•
Unlimited users	-	•	•
Domain Controller	R 250.00		•
File Serving	R 100.00		•
Print Serving	R 100.00		•
Transparent Web Proxy	R 100.00		•
Acceptable Usage Policy	R 200.00		•
Data Backup	R 250.00		•
Fail over Hardware Redundancy	-	•	•
Server Maintenance	-	•	•
Server Monitoring	-	•	•
Server Reporting	-	•	•
2 Hours Telephonic Support	-	•	•
<b>Monthly Subscription</b>		<b>R 1 500.00</b>	<b>R 2 500.00</b>

Set-up Cost		
- Per Server	R 1 500.00	R 2 500.00
- Per Workstation	R 175.00	R 225.00

Pro-active monitoring and administration is crucial to ensuring maximum uptime on mission critical servers. This approach enables NetworksOnline to effectively address potential failures before they occur by closely monitoring the server for warning signs and system anomalies.

### Core Gateway

The Core Gateway is designed to operate as a perimeter server between the internal client network (LAN) and the public network (Internet), linking these two networks. The Core Gateway is also designed to inter-operate with existing internal servers such as Windows 2000 Server, Microsoft Exchange Server and Novell Netware.

The Core Gateway provides essential network services such as routing, firewall, dns, dhcp, network address translation, e-mail and anti-virus protection, as well as effectively preventing SPAM e-mail from entering your network.

### Corporate Gateway

The Corporate Gateway is designed to operate as the sole network server, providing unparalleled control and security. Combined with detailed monitoring and reporting functionality, the Corporate Gateway is the definitive corporate solution.

The Corporate Gateway is unrivalled when evaluating total cost of ownership, performance, stability and reliability, not to mention unlimited growth potential without incurring user licensing costs.

*NetworksOnline*

*“Information is The Solution”*

*www.networksonline.co.za  
info@networksonline.co.za*

*Tel: +27 11 886-7644  
Fax: +27 11 886-7643*

*P.O. Box 1060  
Cresta  
2118*

*280 Oak Avenue  
Randburg  
2194*

*Directors:  
George Soumbouglou  
Lloyd Anderson*

*A division of  
CDR-Technologies  
Reg. #: CK97/31358/23*



## Hardware Specification

Server hardware platforms are dealt with on a per project basis, depending on the requirements of the client. Systems vary from entry level to fully fault tolerant equipment with fail over capabilities.

Clients have the option to either purchase or rent their server platform:

### Server rental

The standardised hardware platform is designed specifically for use as the *Core Gateway*, and offers the benefit of not incurring any initial capital expenditure as well as avoiding the inevitability of hardware becoming outdated.

The standard platform includes a Dell Optiplex Intel Pentium based server, and Netgear networking equipment.

### Server purchase

This option gives the client flexibility in terms of system specification and allows the client to design a hardware platform based on their requirements.

The following servers ranges are available for purchase from NetworksOnline:

- Hewlett Packard / Compaq
- Dell

Hardware supplied by other vendors requires testing and technical approval in order to provide guaranteed compatibility and functionality.

*NetworksOnline*

*“Information is The Solution”*

*www.networksonline.co.za*  
*info@networksonline.co.za*

*Tel: +27 11 886 7644*  
*Fax: +27 11 886 7643*

*P.O. Box 1060*  
*Cresta*  
*2118*

*280 Oak Avenue*  
*Ferndale*  
*Randburg*

*Directors:*  
*George Sombouloglou*  
*Lloyd Anderson*

*A division of*  
*CDR-Technologies*  
*Reg. #: CK97/31358/23*